

**Building:**

## KENNEDY BUILDING

**Apartment:**

## K105

**Beds:**

2

**Baths:**

2

**Other:**

-

**Area sq m:**

68.8

**Area sq ft:**

741

## SPECIFICATION

**Heating:**

- Schneider Cyclone slimline panel heaters
- Heated chrome towels rails to bathrooms and en-suites

**Internal Finishes:**

- Walnut veneer doors
- Satinwood finish to internal skirtings and architraves
- Chrome ironmongery

**Flooring:**

- Walnut laminate flooring to hallways, kitchens and living areas
- Carpets to bedrooms

**Kitchens:**

- German engineered Nolte kitchens
- Integrated Bosch electric oven, touch control ceramic hob and extractor hood
- Integrated fridge/freezer and dishwasher
- Stainless steel 1 1/2 bowl sink with chrome mixer tap  
(Selected duplex and 8th floor penthouses feature upgraded electric double oven, microwave and 80cm induction hob with wide extractor hood over)
- Handleless wall units
- Lighting to underside of wall units

**Bathrooms:**

- Villeroy & Boch bathroom suite with shower and glazed screen over bath
- Hansgrohe brassware and shower fittings with rain-head shower
- Walnut vanity shelf with mirror over
- Tiled walls and floors with feature wall

**Ensuites:**

- Villeroy & Boch sanitaryware
- Hansgrohe brassware and shower fittings with rain-head shower
- Glazed shower screens
- Tiled walls and floors with feature wall

**Electrical & Communication:**

- Telephone points to living areas and master bedrooms
- TV points to living areas and master bedrooms
- Sky pre-wired to living areas and master bedrooms
- Virgin media pre-wired to living areas and master bedrooms
- Brushed steel sockets and switches
- Inset downlighters to living areas, kitchens, hallways, bathrooms and en-suites
- Outside lighting to private terraces (penthouses only)

**Safety & Security:**

- Secured residents' entrance
- Automated door entry system
- Smoke detectors to kitchen and entrance hall

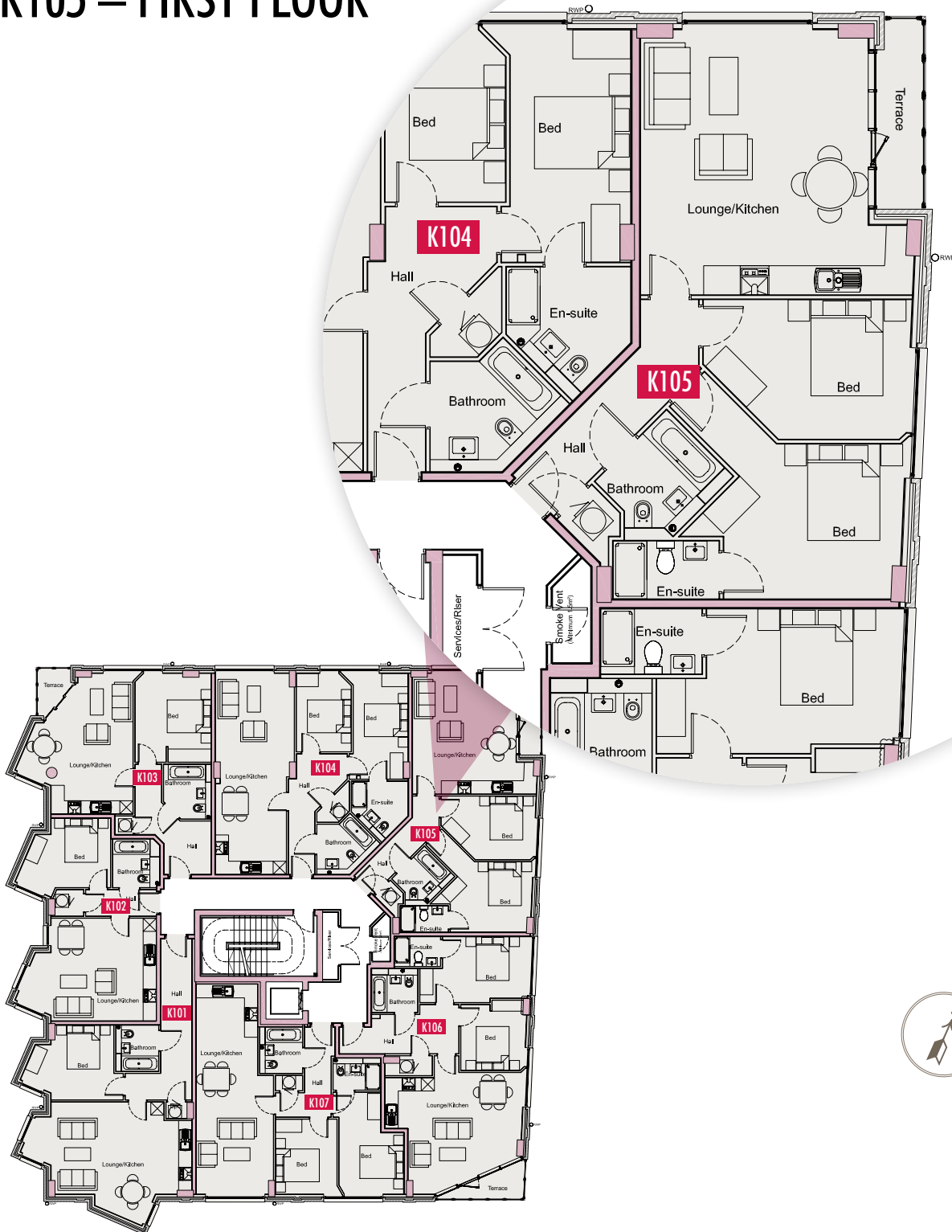
**External:**

- Double glazed windows
- Double glazed doors to private roof terraces (selected apartments only)
- Allocated, underground car parking spaces (optional)



Floorplan:

## K105 – FIRST FLOOR



ROYALMILLS.CO.UK

0161 228 2239